



DARS



DarsTraffic+

Andrea Skroza
Motorway Company in the Republic of Slovenia, DARS d.d.
27.2.2017, Copenhagen

National Traffic Information Centre



DARS

Tasks:

- collecting information on situation on motorways and other national roads and the traffic 24/7 (control centers, drivers, police, local communities, etc.)
 - providing quick, accurate and updated information to the public on the traffic situation on motorways and other national roads
 - providing data on traffic congestions, traffic restrictions etc.
-
- **Final goal: Traffic information must come to the user in the form user can understand and use!**

National Traffic Information Centre



Traffic information:

- Call center
- Webpage
- Radio stations
- Email
- Mobile application
- Giving raw data for free

PIC TRAFFIC INFORMATION CENTRE +386 1 518 8 518
DarsTraffic+ MOBILE APP MY PIC RSS MOBILE SITE SLOVENŠČINA

TRAFFIC CONDITIONS | FREIGHT TRAFFIC | NEWS | SINGLE POINT OF ACCESS

Traffic conditions
Street cameras
Traffic counters
Traffic forecast
Wind measuring system Burja

Choose your way in Slovenia
App Dars Traffic+
Cams
Counters
Rest areas
Weather
Buja wind

From news
Weather Forecast, we recommend attention. [more](#)

Roadside assistance. [more](#)

Karavanke Tunnel
LIVE status of signalisation at the

Traffic report
13/02/2017 10:05
Last update: 13/02/2017 09:52
Vehicles up to 3.5 tonnes pay toll in Slovenia with [vianette](#).

Traffic forecast
Select a date range for traffic forecast:
13 | 2 | 13 | 3

Times to travel
13/02/2017 10:05
Karavanke - LJ 44min
KP - LJ 47min
LJ - Karavanke 1h 00min
LJ - KP 1h 00min
LJ - MB 1h 15min
LJ - MP Obrežje 1h 10min
LJ inner ring 20min
LJ outer ring 21min
MB - LJ 1h 15min
MP Obrežje - LJ 1h 12min

Weather situation
13/02/2017 10:05
LJ 2°C MB 0°C CE 0°C

Road	Description
A2	A2-E61, motorway, near Ljubljana in the direction of Austria traffic jam is reported.
R3	R3-749, Vosek - Jurovski Dol, at Zgoranje Partije, partial road block due to avalanche. Alternative one-way traffic is possible.
G1	G1-7, Kocina - Starod, in Kocina, on Bazoviška cesta, road closed due to roadworks until 20/3/2017. Traffic is diverted.
R2	R2-408, Logatec - Žiri, traffic obstructed on several sections due to damaged road surface.
R1	R1-206, Kranjska Gora - Vrh - Trenta, pass \HŠŠ, snow on the road. Road opened for cars with chains only.



Mobile Application DarsTraffic+

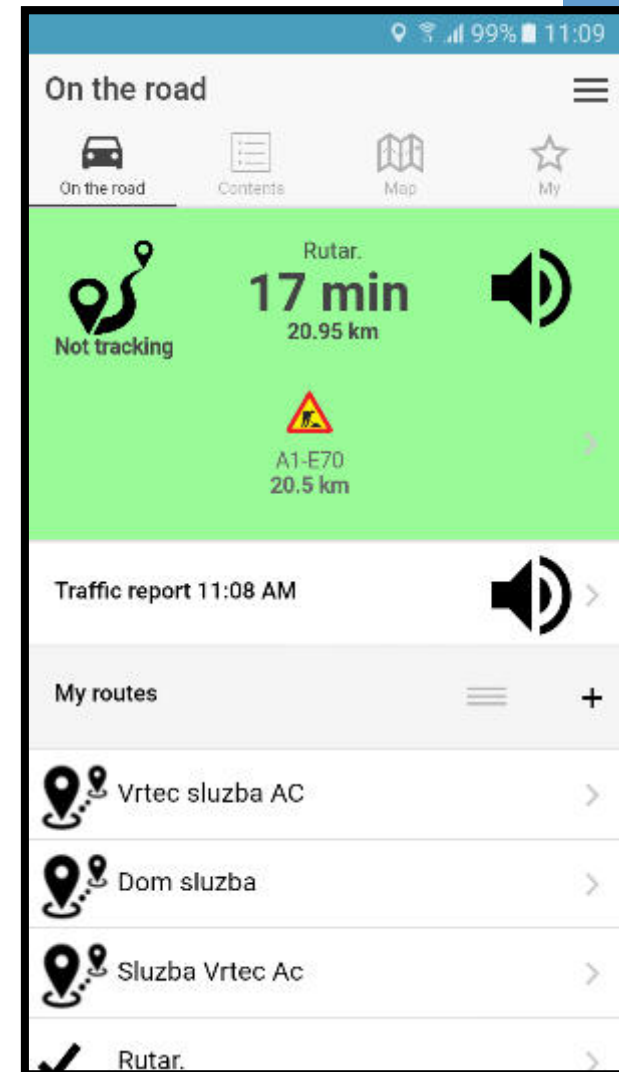


DARS

- Number of drivers that use Traffic information center is increasing significantly. Automatization was needed.
- Number of different web page users:
 - 2015 → 1.258.111
 - 2016 → 2.086.113(Slovenia has a population of 2.064.188)
- Number of downloaded DarsTraffic+ applications:
 - Since released in April 2016 → 45.000
- Number of calls to TIC is slightly decreasing on behalf of the application and webpage.

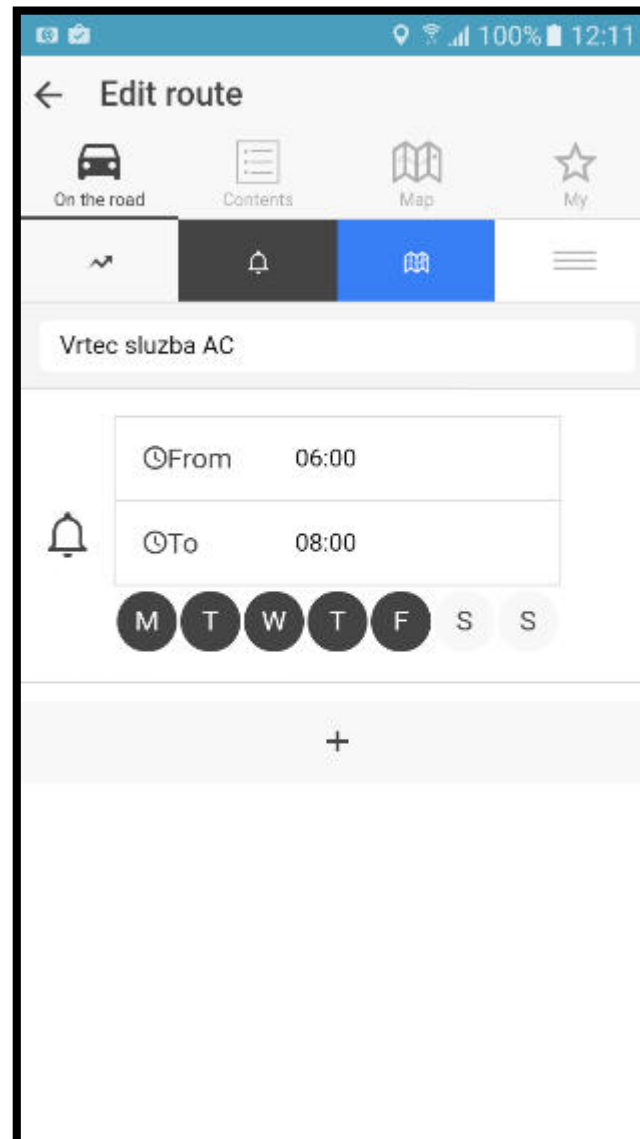
Who uses application DarsTraffic+?

- Drivers who drive daily to work
- Drivers that often drive on certain routes
- Drivers can choose their favorite routes:
 - driving time (tracking your routes and estimates remaining time)
 - any special traffic incidents or road works
 - traffic density
 - voice reading – so drivers can keep their eyes on the road



Notification center

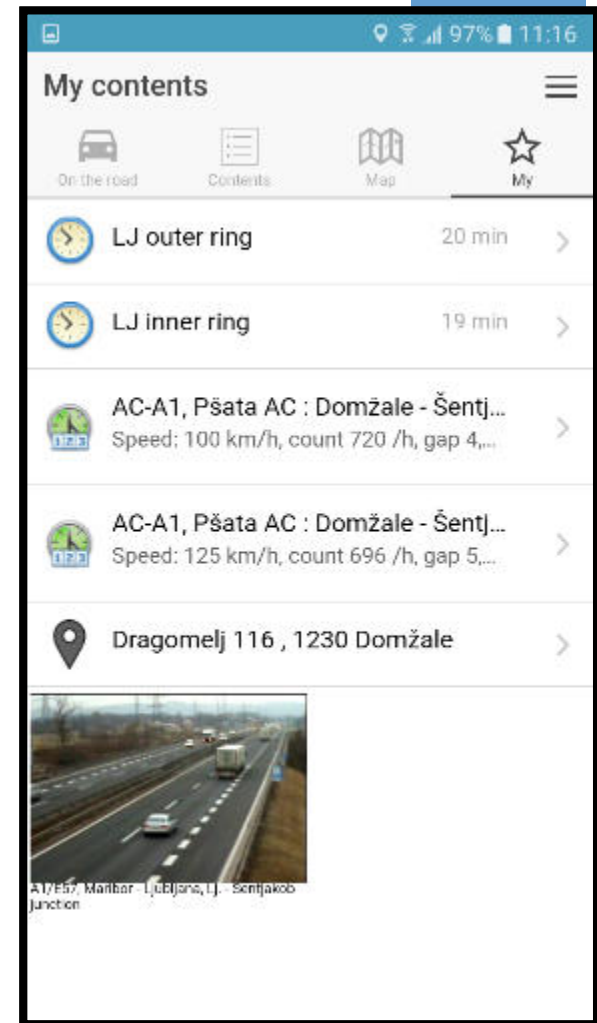
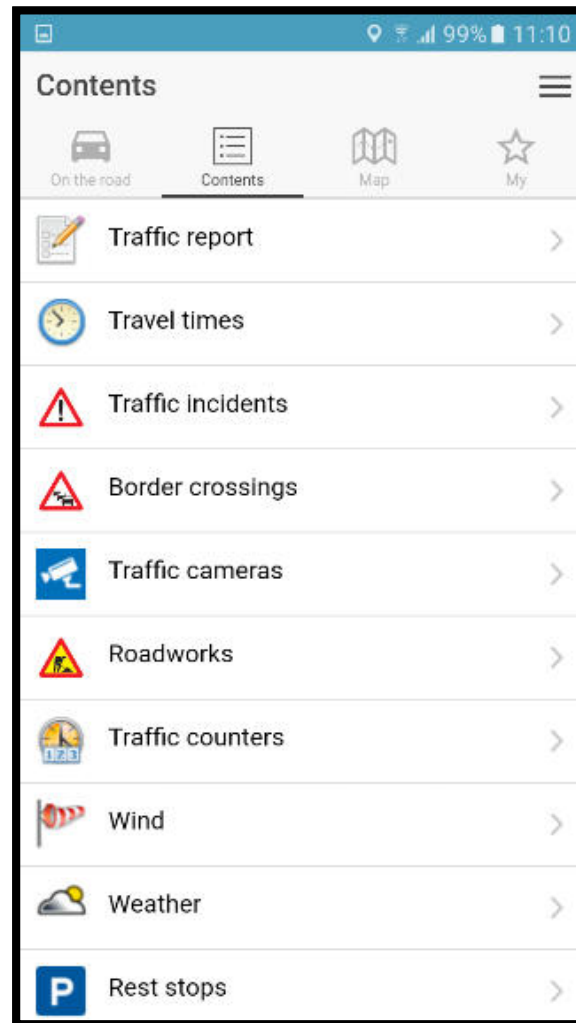
- For each route
- Notification frequency
 - at every change, at most 15 minutes or at most 1 hour
- Notification time
 - from-to hours, days of the week
- Notification target
 - mobile phone, email



DARS

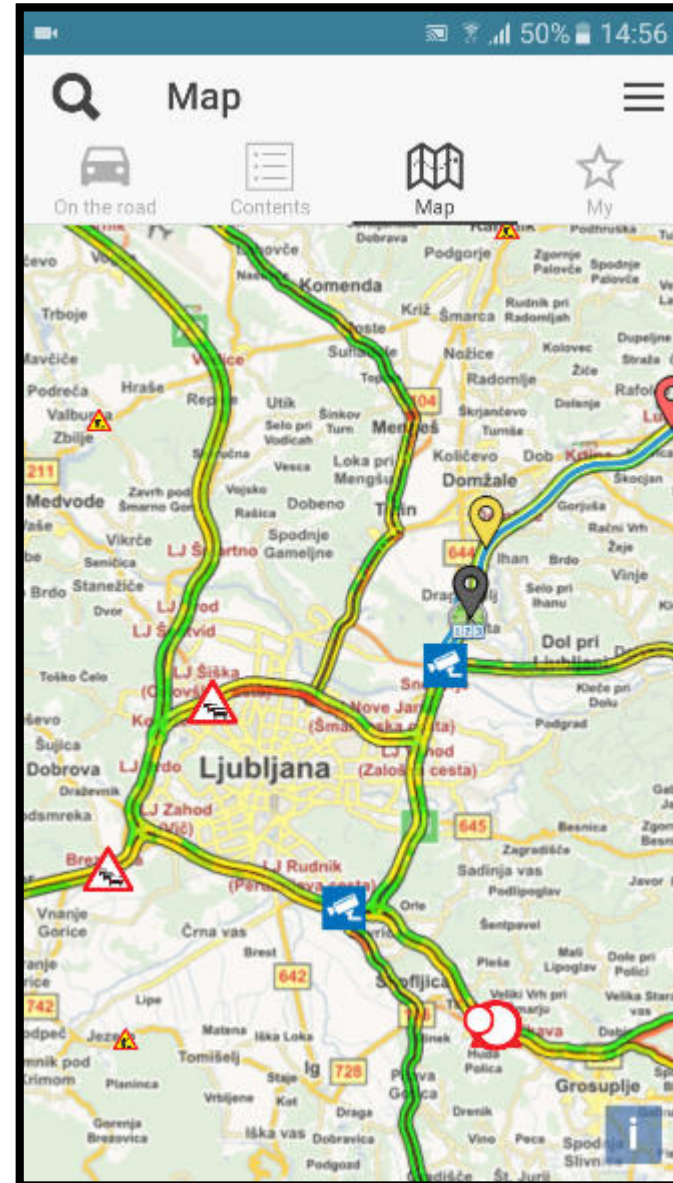
Other information - Contents

- ★ Travel times
- ★ Traffic cameras
- ★ Traffic counters
- ★ Weather
- ★ Rest stops
- Traffic report
- Traffic incidents
- Border crossings
- Roadworks
- Wind
- Traffic calendar
- Vignettes
- Contacts



Other information - map

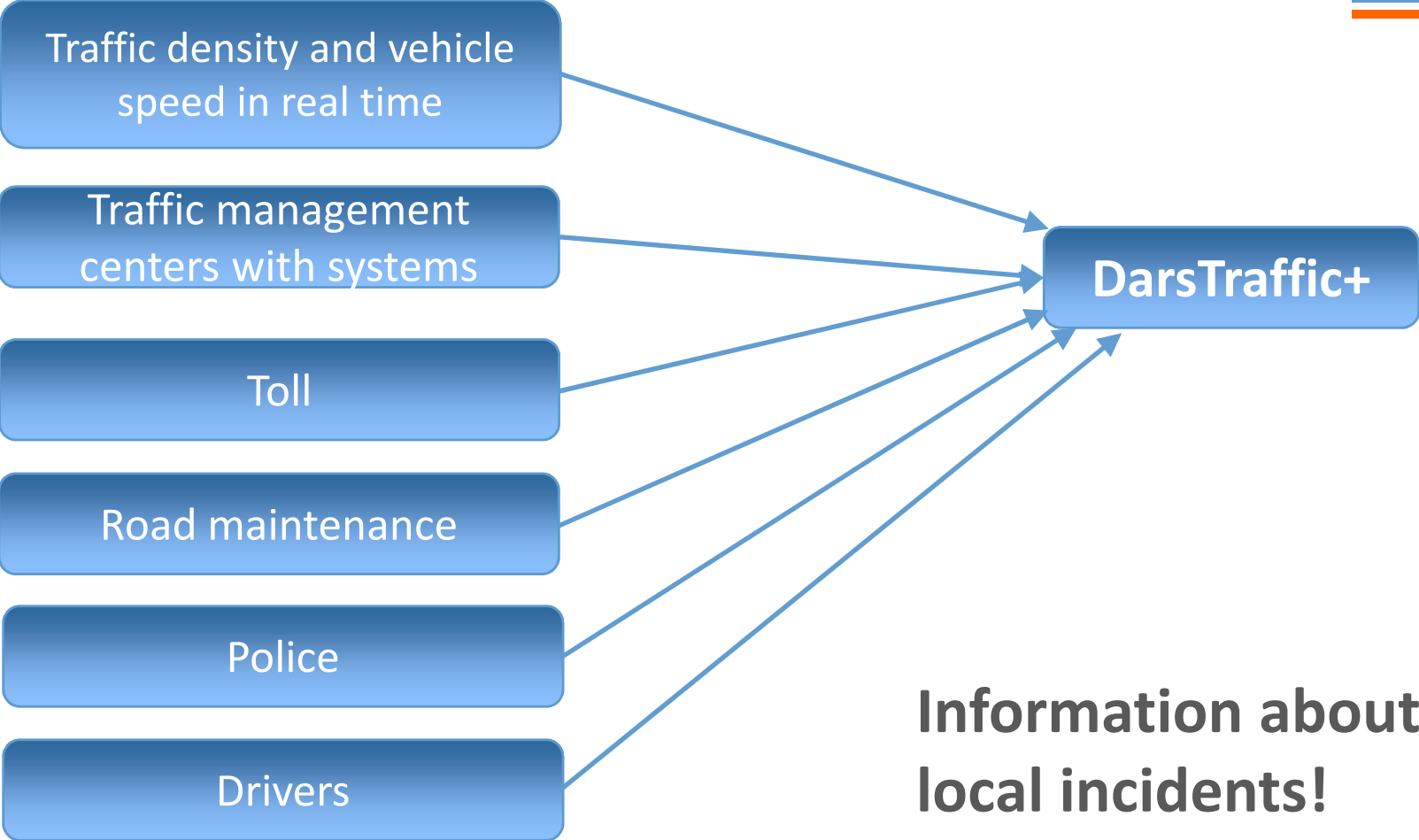
- Contents on map:
 - Traffic density
 - Traffic cameras
 - Traffic counters
 - Weather
 - Rest stops
 - Traffic incidents
 - Roadworks
 - Wind
 - My contents



Short video

The screenshot shows a navigation application interface. At the top, there is a status bar with icons for Wi-Fi, location, cellular signal, 42% battery, and the time 09:54. Below the status bar, the title "On the road" is displayed on the left, and a hamburger menu icon is on the right. A navigation bar contains four icons: "On the road" (car icon), "Contents" (list icon), "Map" (map icon), and "My" (star icon). The main content area has a green background and displays the route "Lj jug-Dragomelj" with a travel time of "7 min" and a distance of "10.27 km". Below this, it says "Arriving at 10:02 AM". On the left, there is a "Tracking" icon. On the right, there is a speaker icon. At the bottom, there are two warning icons: a yellow triangle with a black silhouette of a person falling (1.37 km) and a red triangle with a black exclamation mark (4.2 km). Both warnings are for the "A1-E57" highway. A pink arrow points to the right at the bottom right corner.

Why is application DarsTraffic+ so accurate?



Easy accessibility

- Application is free of charge
- Operation systems: Android, IOS and Windows
- It takes 2 – 3 Mb space on your telephone
- When using the application at least 2 hours a day you will use up to 300 Mb/month
- Notification system – very low data consumption
- User system on www.promet.si (application management directly from the webpage)

DARS



A screenshot of the DarsTraffic+ web application interface. The header features the 'PIC TRAFFIC INFORMATION CENTRE' logo, a contact number '+386 1 518 8 518', and navigation links for 'MY PIC', 'RSS', 'MOBILE SITE', and 'SLOVENŠČINA'. The main content area includes a login form with fields for 'Email' and 'Password', and buttons for 'Log in with Google+', 'Log in with Facebook', and 'Log in'. A 'Lost password' and 'New user registration' link is also present. A sidebar on the left lists various traffic-related services like 'Traffic conditions', 'Street cameras', and 'Wind measuring system Burja'. A 'My routes' section is also visible at the bottom.

Plans for the future

- Regular updates and improvement of application
- To include rerouting in the application
 - application is capable to follow GPS – there are GIS maps in the background, which allow data transfer and routing
- To include direct communication driver – driver
 - driver can report incidents on the road using application
- To include application in Cooperative Intelligent Transport Systems (C-ITS):
 - communication: V – V, V – I and V - X
 - communication goes through microwave detectors or/and mobile networks
 - pilot projects for both kind of communications
 - application DarsTraffic+ is our tool for C-ITS implementation



DARS

Thank you for your attention.

More information:

www.promet.si

brane.nastran@promet.si