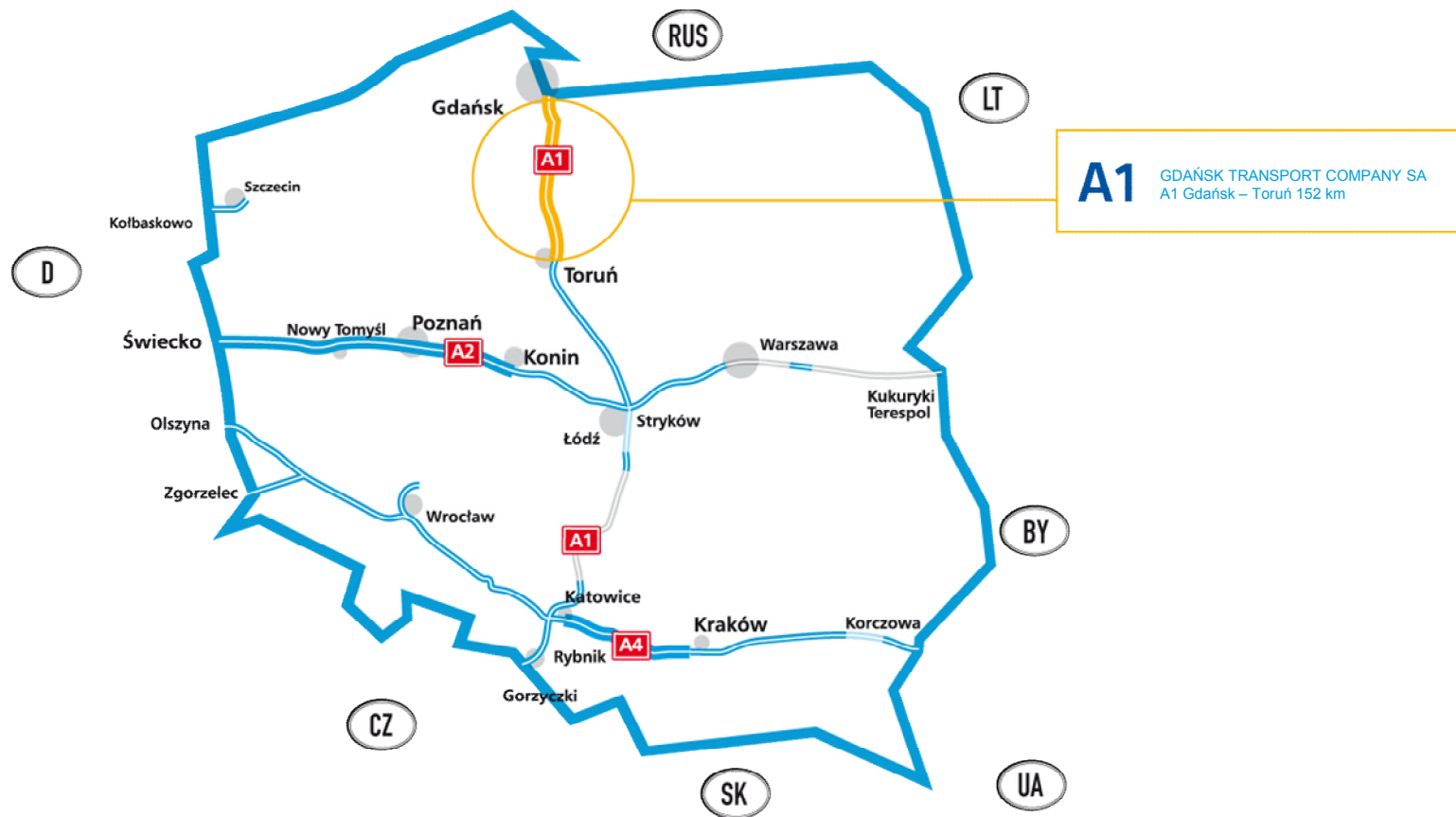


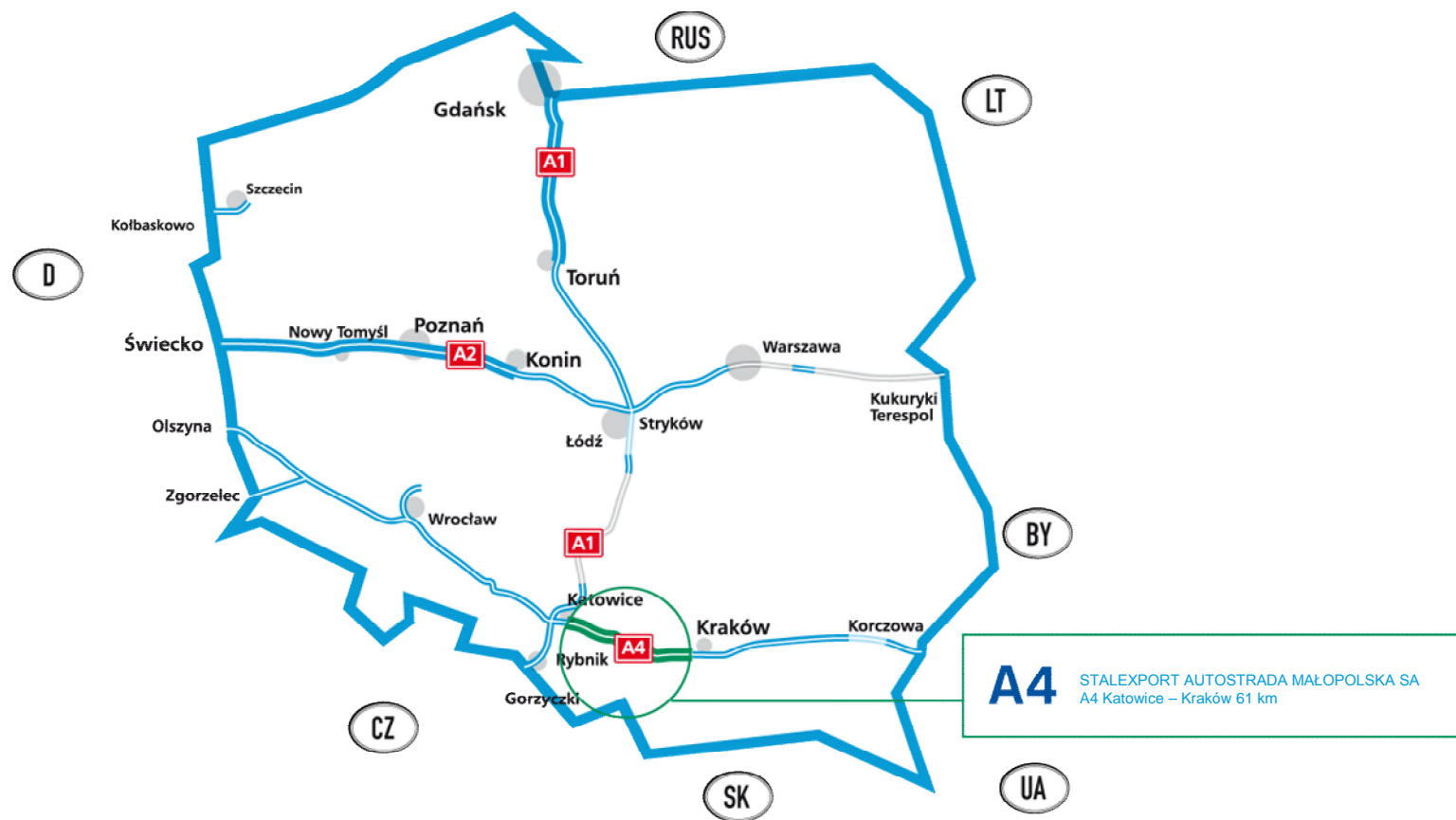
Behaviour of the Users on the Polish motorways and express roads – safety aspects

9th ASECAP Safety Day
Warsaw, 08/03/2016

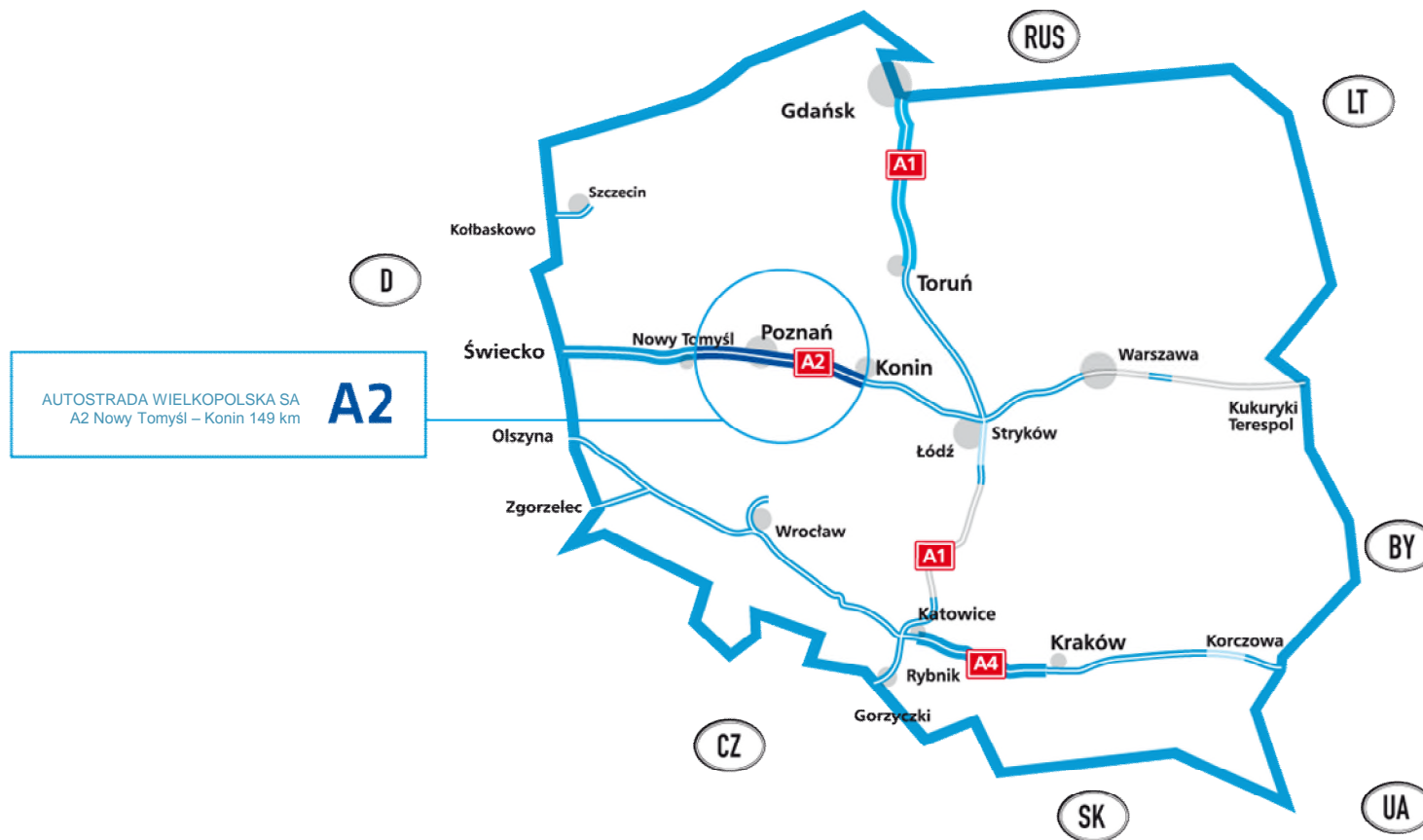
AWSA



AWSA



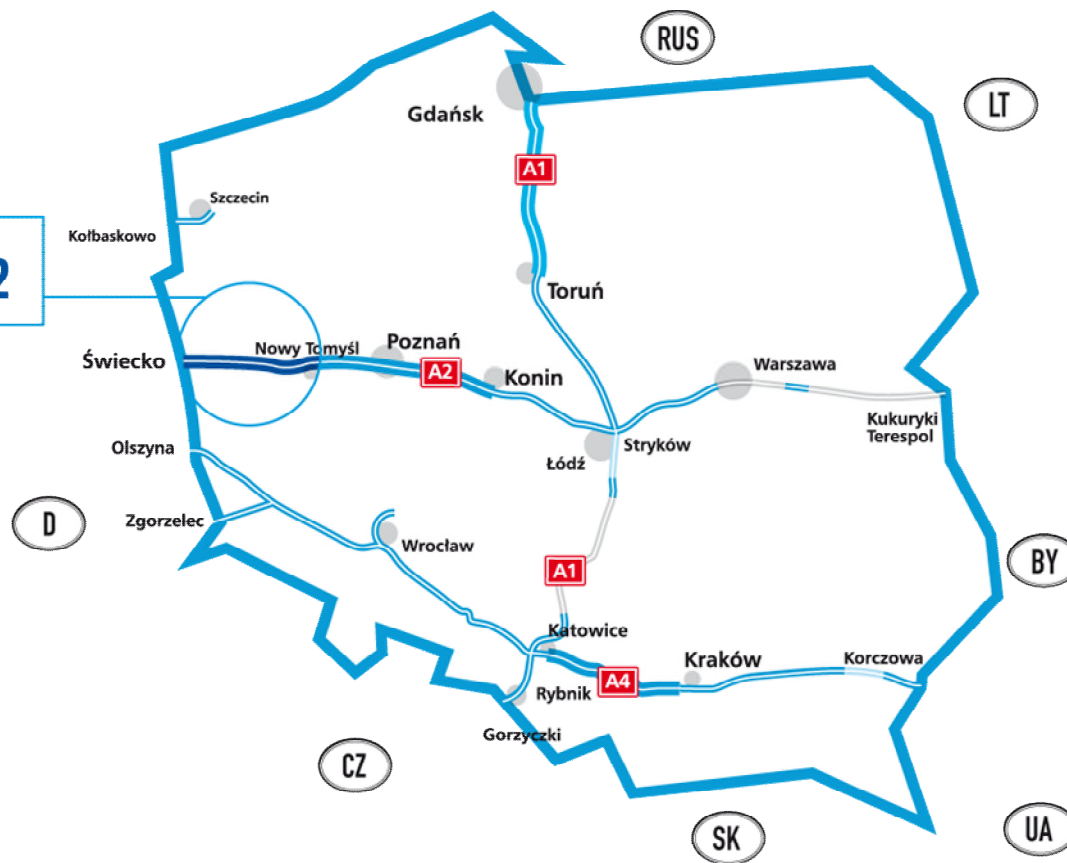
AWSA



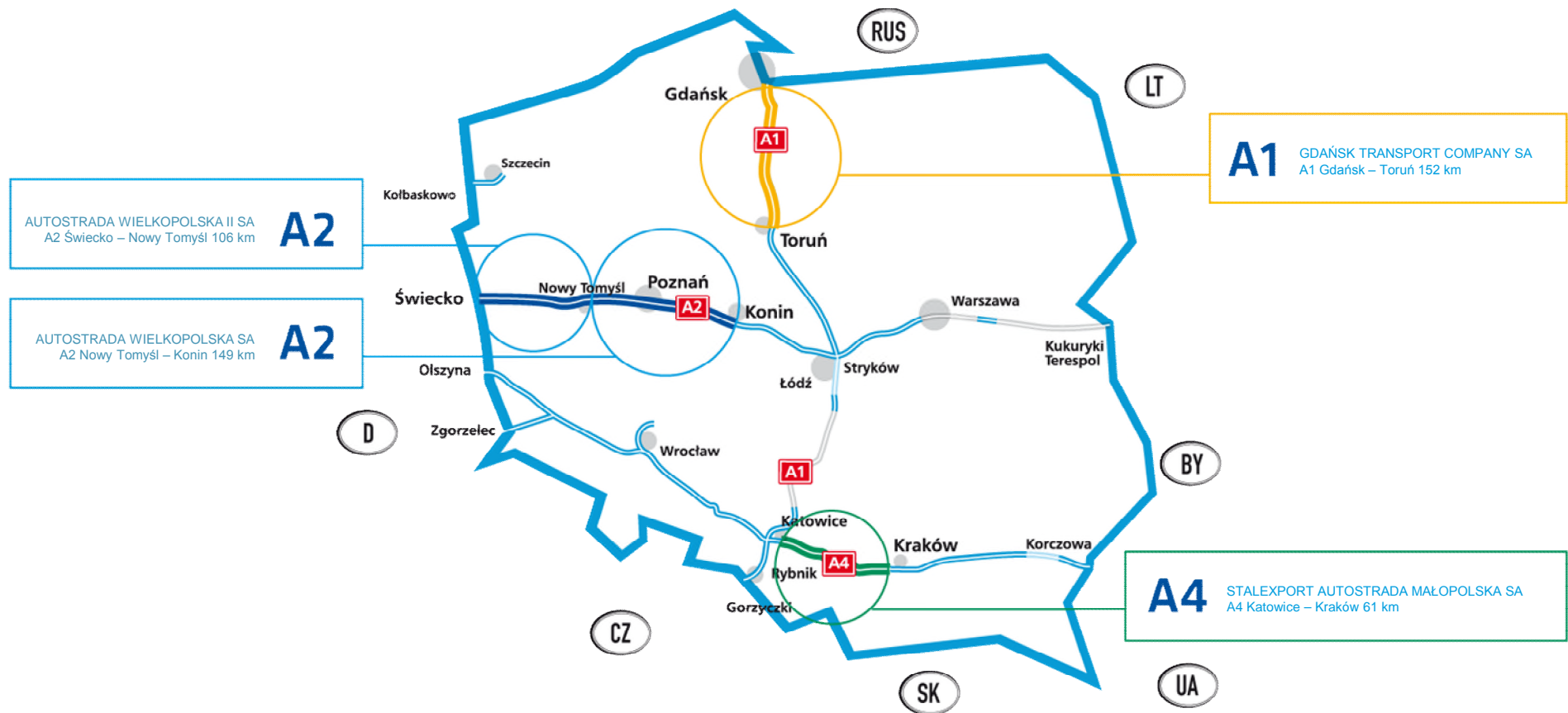
AWSA

AUTOSTRADA WIELKOPOLSKA II SA
A2 Świecko – Nowy Tomyśl 106 km

A2



AWSA



The formation of a „CORRIDOR OF LIFE” on a blocked road

- ❑ Neither legislation nor explicit principle exist in Poland
- ❑ Two kinds of behaviour:
 - ✓ Vehicles remain in their traffic lanes – emergency lane on the hard shoulder available
 - ✓ Free passage along the dividing line in the middle is possible



The formation of a „CORRIDOR OF LIFE” on a blocked road

- ❑ Neither legislation nor explicit principle exist in Poland
- ❑ Two kinds of behaviour:
 - ✓ Vehicles remain in their traffic lanes – emergency lane on the hard shoulder available
 - ✓ Free passage along the dividing line in the middle is possible



Maintaining appropriate distances between vehicles

- ☐ No exact provisions in the Polish law
- ☐ No relevant signage on the roads
- ☐ Related safety problems include:
 - ✓ Rear-end collisions with preceding vehicle
 - ✓ Colliding with the vehicle during overtaking
 - ✓ Problem of squeezing into a gap between two vehicles by the overtaking car
 - ✓ Pressure on the preceding vehicle's driver



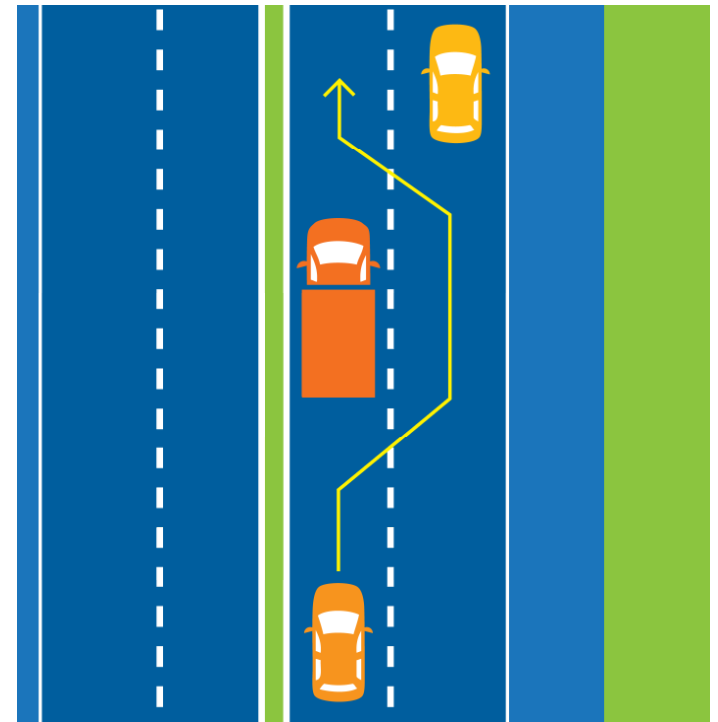
Maintaining appropriate distances between vehicles

- ☐ No exact provisions in the Polish law
- ☐ No relevant signage on the roads
- ☐ Related safety problems include:
 - ✓ Rear-end collisions with preceding vehicle
 - ✓ Colliding with the vehicle during overtaking
 - ✓ Problem of squeezing into a gap between two vehicles by the overtaking car
 - ✓ Pressure on the preceding vehicle's driver



Overtaking on the right lane

- ☐ According to the Polish Traffic Law Act overtaking on the right lane on one-way carriageway is allowed
- ☐ Relevant provisions arguable
- ☐ Serious consequences resulting from high speed
- ☐ Legislation change required



Pedestrians on high speed roads

- ☐ Motorways and express roads are assigned only for vehicles (pedestrians not allowed)
- ☐ Such behaviours have still been observed
- ☐ Several types of people on the road:
 - ✓ Drivers trying to repair their vehicles
 - ✓ People standing outside of their vehicles when queueing in a traffic jam
 - ✓ Hitchhikers / carpoolers
 - ✓ Others



Pedestrians on high speed roads

- ☐ Motorways and express roads are assigned only for vehicles (pedestrians not allowed)
- ☐ Such behaviours have still been observed
- ☐ Several types of people on the road:
 - ✓ Drivers trying to repair their vehicles
 - ✓ People standing outside of their vehicles when queueing in a traffic jam
 - ✓ Hitchhikers / carpoolers
 - ✓ Others



Pedestrians on high speed roads

- ☐ Motorways and express roads are assigned only for vehicles (pedestrians not allowed)
- ☐ Such behaviours have still been observed
- ☐ Several types of people on the road:
 - ✓ Drivers trying to repair their vehicles
 - ✓ People standing outside of their vehicles when queueing in a traffic jam
 - ✓ Hitchhikers / carpoolers
 - ✓ Others



Pedestrians on high speed roads

- ☐ Motorways and express roads are assigned only for vehicles (pedestrians not allowed)
- ☐ Such behaviours have still been observed
- ☐ Several types of people on the road:
 - ✓ Drivers trying to repair their vehicles
 - ✓ People standing outside of their vehicles when queueing in a traffic jam
 - ✓ Hitchhikers / carpoolers
 - ✓ Others



Driving against the flow of traffic

- ☐ Abuses have still been observed:
 - ✓ On **12.08.2015**, a German woman drove more than 60 km on the state-owned A2 Motorway between Łódź and Dąbie before being stopped by the Police
 - ✓ On **01.11.2015**, a car collided head-on with a truck while driving against the flow of traffic on the state-owned A1 Motorway near Piotrków Trybunalski
 - ✓ On **25.12.2015**, a car entered the A1 Motorway (managed by GTC SA) from the wrong direction at the Nowe Marzy Interchange
- ☐ Additional signage on interchanges and rest areas required



Driving against the flow of traffic

- ☐ Abuses have still been observed:
 - ✓ On **12.08.2015**, a German woman drove more than 60 km on the state-owned A2 Motorway between Łódź and Dąbie before being stopped by the Police
 - ✓ On **01.11.2015**, a car collided head-on with a truck while driving against the flow of traffic on the state-owned A1 Motorway near Piotrków Trybunalski
 - ✓ On **25.12.2015**, a car entered the A1 Motorway (managed by GTC SA) from the wrong direction at the Nowe Marzy Interchange
- ☐ Additional signage on interchanges and rest areas required



Driving against the flow of traffic

- ☐ Abuses have still been observed:
 - ✓ On **12.08.2015**, a German woman drove more than 60 km on the state-owned A2 Motorway between Łódź and Dąbie before being stopped by the Police
 - ✓ On **01.11.2015**, a car collided head-on with a truck while driving against the flow of traffic on the state-owned A1 Motorway near Piotrków Trybunalski
 - ✓ On **25.12.2015**, a car entered the A1 Motorway (managed by GTC SA) from the wrong direction at the Nowe Marzy Interchange
- ☐ Additional signage on interchanges and rest areas required



Driving against the flow of traffic

- ☐ Abuses have still been observed:
 - ✓ On **12.08.2015**, a German woman drove more than 60 km on the state-owned A2 Motorway between Łódź and Dąbie before being stopped by the Police
 - ✓ On **01.11.2015**, a car collided head-on with a truck while driving against the flow of traffic on the state-owned A1 Motorway near Piotrków Trybunalski
 - ✓ On **25.12.2015**, a car entered the A1 Motorway (managed by GTC SA) from the wrong direction at the Nowe Marzy Interchange
- ☐ Additional signage on interchanges and rest areas required



Vehicles left in the emergency lane and shoulders

- ☐ No strict provisions in the Polish law in terms of removal time
- ☐ Decision to remove the car at the owner's expense to be made by the Police
- ☐ Related dangers and hindrances:
 - ✓ Risk of colliding with such a vehicle
 - ✓ Negative impact on smooth traffic flow
 - ✓ Abandoned vehicles hinder maintenance



Vehicles left in the emergency lane and shoulders

- ☐ No strict provisions in the Polish law in terms of removal time
- ☐ Decision to remove the car at the owner's expense to be made by the Police
- ☐ Related dangers and hindrances:
 - ✓ Risk of colliding with such a vehicle
 - ✓ Negative impact on smooth traffic flow
 - ✓ Abandoned vehicles hinder maintenance



Vehicles left in the emergency lane and shoulders

- ☐ No strict provisions in the Polish law in terms of removal time
- ☐ Decision to remove the car at the owner's expense to be made by the Police
- ☐ Related dangers and hindrances:
 - ✓ Risk of colliding with such a vehicle
 - ✓ Negative impact on smooth traffic flow
 - ✓ Abandoned vehicles hinder maintenance



Large-sized advertisement boards along motorways

- ☐ European Agreement on Main International Traffic Arteries (AGR):
'for safety and aesthetic reasons roadside advertising hoardings shall be prohibited on international roads'
- ☐ AGR integrated into the Polish legal code in 1985 but there have been no implementing provisions
- ☐ No effective tool to reduce the amount of hoardings



Large-sized advertisement boards along motorways

- ☐ European Agreement on Main International Traffic Arteries (AGR):
'for safety and aesthetic reasons roadside advertising hoardings shall be prohibited on international roads'
- ☐ AGR integrated into the Polish legal code in 1985 but there have been no implementing provisions
- ☐ No effective tool to reduce the amount of hoardings

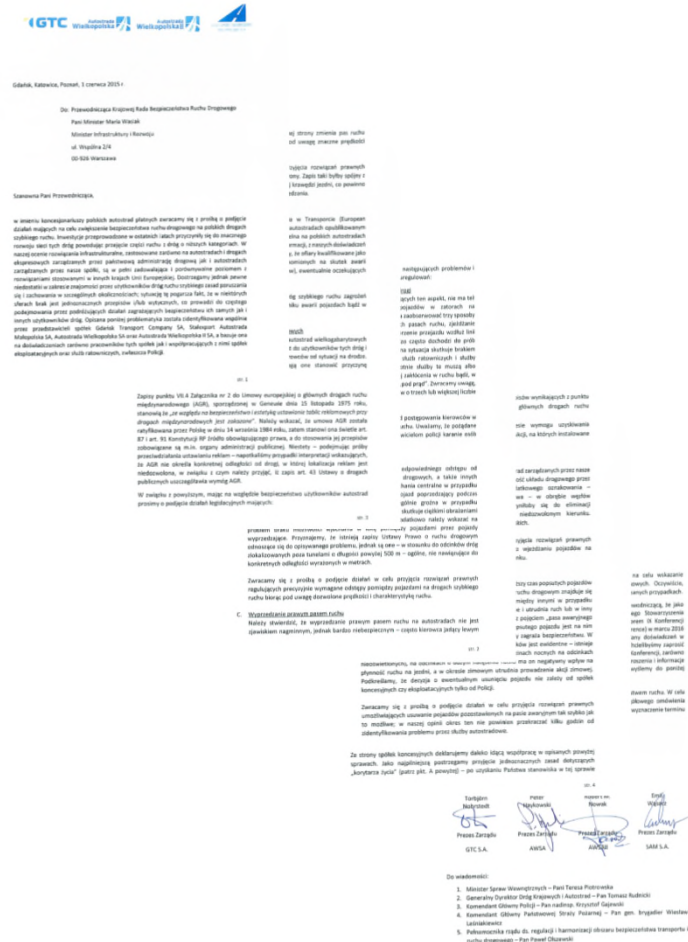


the Chairperson of the National Road Traffic Safety Council

The joint letter sent on 01/06/2015 to:

also brought to the attention of:

- ✓ Minister of Internal Affairs
- ✓ General Director for National Roads and Motorways
- ✓ Police Commander in Chief
- ✓ State Fire Service Commander in Chief
- ✓ Government Plenipotentiary for Regulation and Harmonisation in the Area of Road Safety



Suggestions

- ☐ Legislation revision and/or
- ☐ Establishing of code of best practice and
- ☐ Social campaign (the private concessionaires declare their cooperation)

Thank you for your attention

Michał Pabich
Autostrada Wielkopolska SA
m.pabich@mail.autostrada-a2.pl